

**SPECIFICATION**

**A: MATERIAL:**

- 1.BODY: PC
- 2.TERMINAL: Cu PLATED Sn
- 3.PIN: Cu PLATED Ni
- 4.COVER: PC

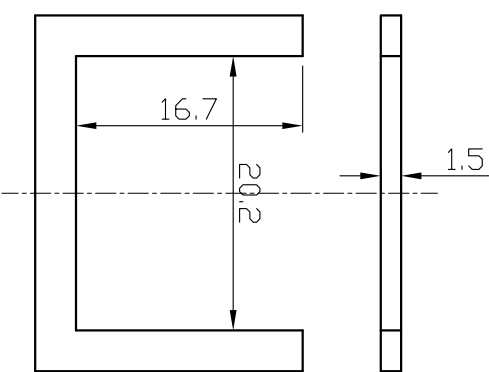
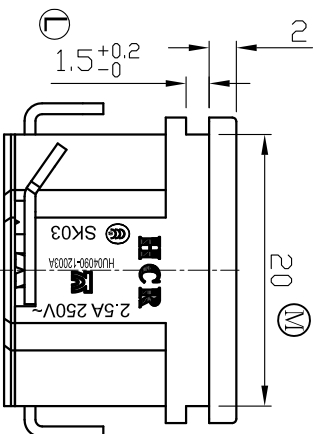
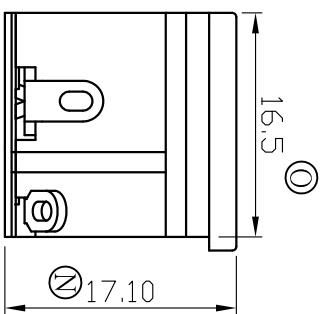
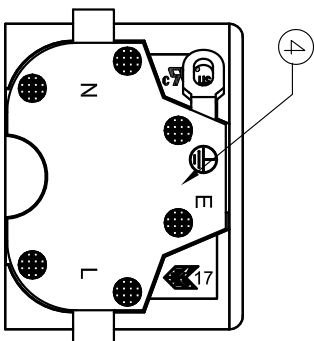
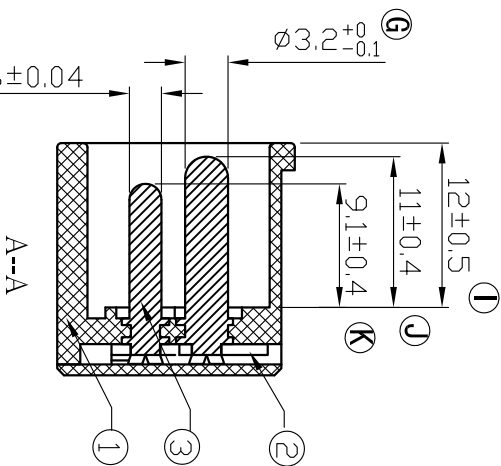
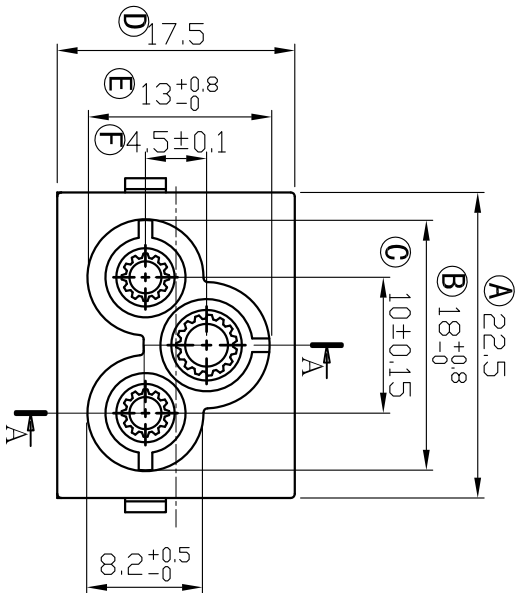
**B: CHARACTERISTICS:**

- 1.RATING: 2.5A 250V~(C-ULus, ENEC & CCC & KC )
- 2.INSULATION RESISTANCE:100MΩ MIN,AT 500VDC
- 3.ELECTRIC STRENGTH : AC 3,000 V/1 MIN,LEAKAGE CURRENT UNDER 0.5mA

**C: APPROVALS: C-ULus, ENEC & CCC & KC**

**D: MATERIAL USED MUST BE COMPLY WITH HQI-0010**

**E: CAN MEET ROHS,ROHS2.0,HF**



**PANEL CUT-OUT**

TOLERANCES UNLESS OTHERWISE	
未指定容許差尺寸之公差	
BASIC DIMENSIONS TOLERANCES	
UP TO 10 (10以下)	±0.10
ABOVE 10 TO 30(10-30)	±0.3
ABOVE 30 TO 100(30-100)	±0.5
ANGULAR DIMENSIONS(角度)	±5°
DIMENSION UNIT	mm

東莞市華之力電子有限公司 DONGGUAN HCR ELECTRONICS CO., LTD.

2										
1	2012/09/26	修改列字位置 "UT" "ENEC"	A1	Weichen	Aaronjin					
0	2012/08/15	新制訂	A0	Weichen	Aaronjin					
NO	DATE	REVISION DESCRIPTION	REVISION	RDRAWN	APPROVED					

核准	Aaronjin	日期	20120719	投影法	第一角	機型	INLET SOCKET
校對	RZTang	日期	20120719	比例	1:1	型號	SK03
繪圖	Weichen	日期	20120719	路徑	ISO3830049	料號	SK03-0601090923CH